



Lightweight Flexible Photovoltaic Module Project Series

APPLICATIONS

building integrated and building applied PV
(rooftop, facade)
Outdoor & mobile applications

100 Wp – 335 Wp POWER RANGE
Positive power tolerance 0/+5W

HIGH RELIABILITY

IEC 61730
IEC 61215
IEC 62804-1
IEC 61701 Salt mist corrosion test
IEC 62716 Ammonia corrosion test
EN 13501-5 B_{ROOF}(t1) „Flying sparks test“

WARRANTY

10-year product warranty
25-year linear performance warranty

For building integrated and
building applied installations



Ultra-lightweight

Weight as low as 2.5 kg
per square meter.



Patented design

A patented design ensures that
the modules are only 2 mm thick.



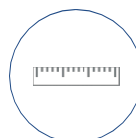
Flexibility

Their flexibility ensures that
the modules conform to the
corresponding substructure.



Easily mounted with a number of assembly options

The modules can be glued, screwed, riveted, or
mounted onto the substructure using existing
eyelets.



Customer-specific and project-specific solutions

Model size, shape, and color are customizable.



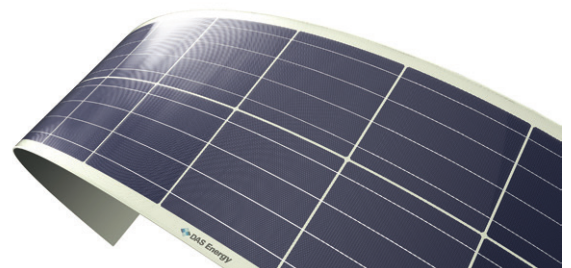
High energy yield

Light-trapping effect generated
by the lenticular surface.

| TECHNICAL DATA | | |
|---|--|-------------------|
| Product | 10x6 poly / mono | 12x6 poly / mono |
| Number of cells | 60 | 72 |
| Dimensions "front junction box" (L x W x T) | 1706 x 991 x 2 mm | 2024 x 991 x 2 mm |
| Dimensions "rear junction box" (L x W x T) | 1657 x 991 x 2 mm | 1975 x 991 x 2 mm |
| Weight | 5.7 kg | 6.7 kg |
| Solar cells | 4BB polycrystalline solar cells (optional monocrystalline) | |
| Maximum system voltage | 1000 V | |
| Maximum over current protection | 20 A | |
| Front sheet | Soil-resistant ETFE-Film | |
| Encapsulation | Patented fibreglass-reinforced plastic, EVA | |
| Back sheet | High resistant PET | |
| Junction box | TÜV-certified (IP 67) with 3 bypass-diodes | |
| Cables | 2 x 4 mm ² , 900 mm | |
| Connector | PV4S | |

| ELECTRIC CHARACTERISTICS | | | | | | | |
|--------------------------|------|-------|------------|---------|---------|---------|---------|
| Name | Type | Cells | Power (Wp) | Isc (A) | Voc (V) | Imp (A) | Vmp (V) |
| 10x6 | poly | 60 | 250 | 8.41 | 37.57 | 8.02 | 31.17 |
| 10x6 | mono | 60 | 280 | 9.11 | 38.69 | 8.74 | 32.52 |
| 12x6 | poly | 72 | 300 | 8.41 | 45.08 | 8.02 | 37.40 |
| 12x6 | mono | 72 | 335 | 9.11 | 46.43 | 8.74 | 39.02 |

| THERMAL CHARACTERISTICS | |
|------------------------------|-------------|
| Operating temperature range | -40 to 85°C |
| Temperature coefficient Pmpp | -0.393 %/°C |
| Temperature coefficient Voc | -0.310 %/°C |
| Temperature coefficient Isc | 0.051 %/°C |



Scientific Partners and Associations

